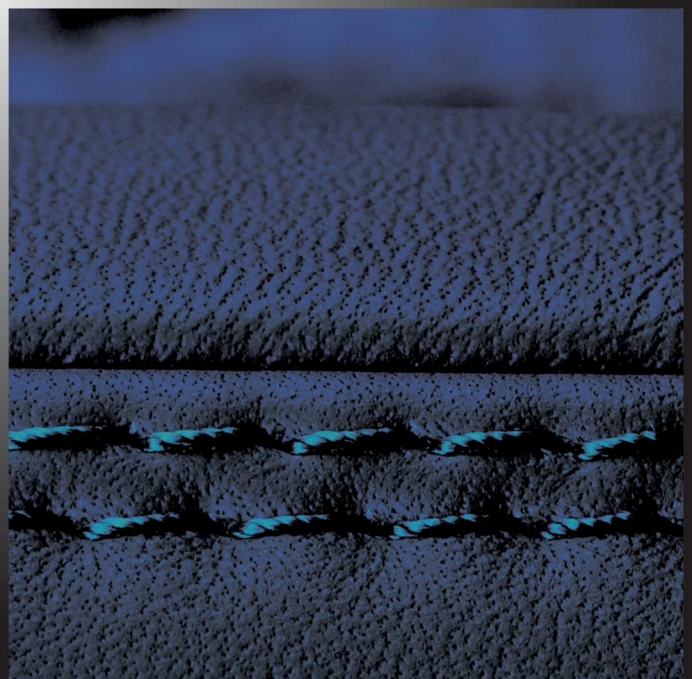
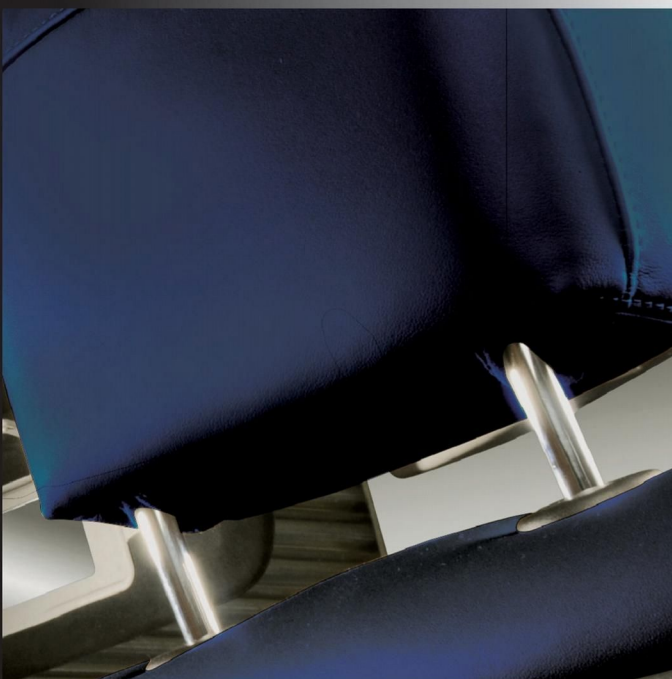
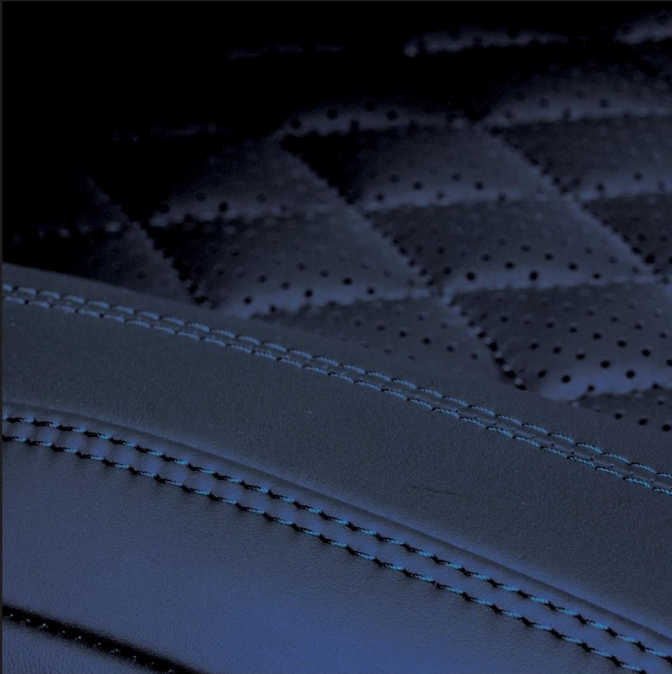




Autoleder / Car Leather
Autokunstleder / Imitation Leather



BASIS

| geprägt, korrigiert

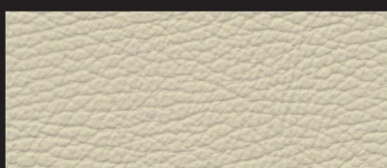
| embossed, corrected

BASIS

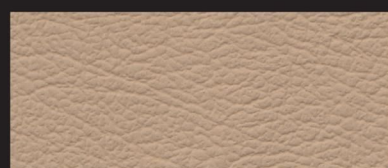
für BMW



1737B elfenbeinweiß



3080B lemon



1338B k1338 sandbeige



1739B venetobeige



1729B 1729BSA creambeige



1330B lightgelb



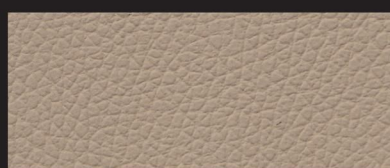
3010B k1725 3010BSA beige 3



3100B k3100 oyster



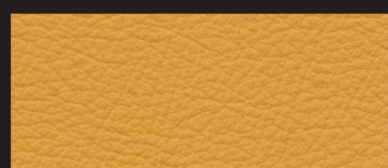
1335B safrangelb



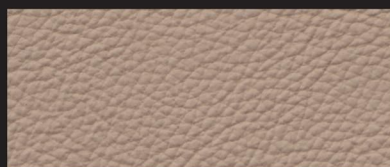
3090B beige/savannabeige



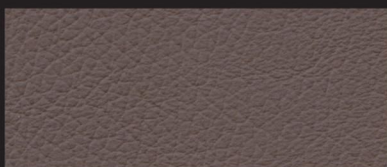
3040B amethyst/rosenholz



1341B maisgelb



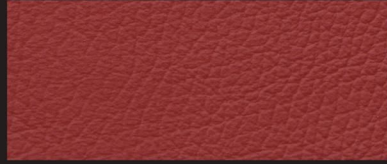
1345B hellbeige



3050B trüffelbraun



1348B 1348BSA naturbaun



1734B korallrot



1332B hellgrau



1735B k1735 1735BSA sattelbraun



1130B klassischrot



1738B everestgrau



5010B terracotta



1329B taninrot



3110B alaskagrau



3030B kastanienbraun



1728B chateau



3020B k1726 grau 060



1736B 1736BSA zimtbraun



1740B 1740BSA tabak



1010B grau für BMW



3070B k3070 3070BSA terra



2210B tobagoblau



3000B k3000 3000BSA schwarz



3120B rotbraun



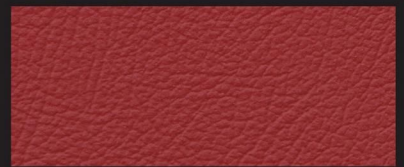
1040B marineblau

BASIS

für MB + Porsche



1338B **k1338** java



1137B **k1137** scarletrot/can-can



1963B porzellan



1138B **k1138** helios



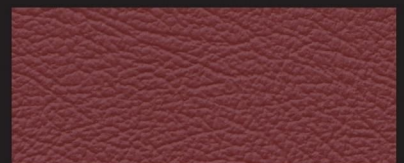
1203B magmarot/lipstick



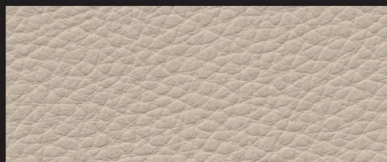
1911B **k1911** kieselbeige



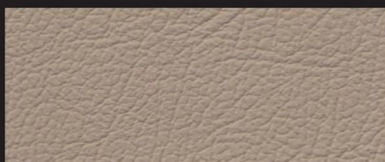
1143B siambeige



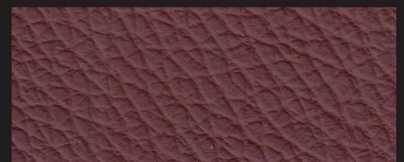
1146B **k1146** akzentrot



1729B **1729BSA** saharabeige



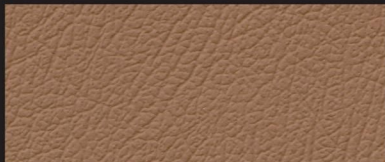
1103B **k1103** champignon



1961B flamencorot



1964B seidenbeige



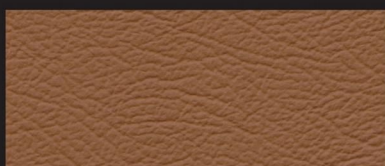
1107B dattel



1728B sunsetrot



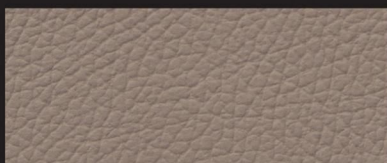
1954B kaschmirbeige/buckskin



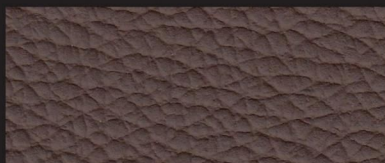
1114B safran



1104B mittelrot



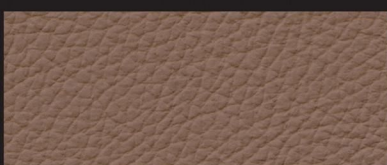
1960B mandelbeige



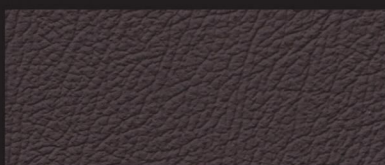
1962B nussbraun



1111B piniengrün



1956B savannenbeige/landscape



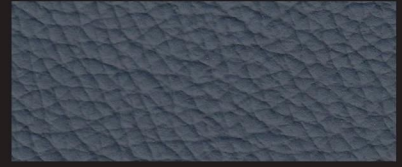
1108B brasil



1097B **k1097** reinweiß



1140B aerograu



1916B pazifikblau



1112B weiß



1120B **k1120** oriongrau



1124B merlinblau



1965B kristallgrau



1116B **k1116** oriongrau mittel



1141B mondrian



2190B alpacagrau



1110B grau für MB



1118B galaxyblau



1122B quarz



1206B schiefer



1109B blau



1912B sierragrau



1915B anthrazit Catania



1901B blauschwarz für Smart



1147B mittelgrau



1115B **k1115** anthrazit



1980B tiefschwarz glänzend



3000B **k3000 3000BSA** schwarz



1113B **k1113** schwarz classic



1913B schwarz Catania

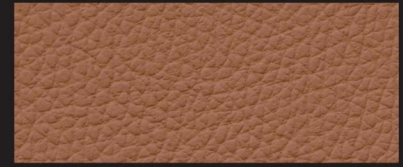
BASIS für Volkswagengruppe



1805B yellow



1809B tropicorange



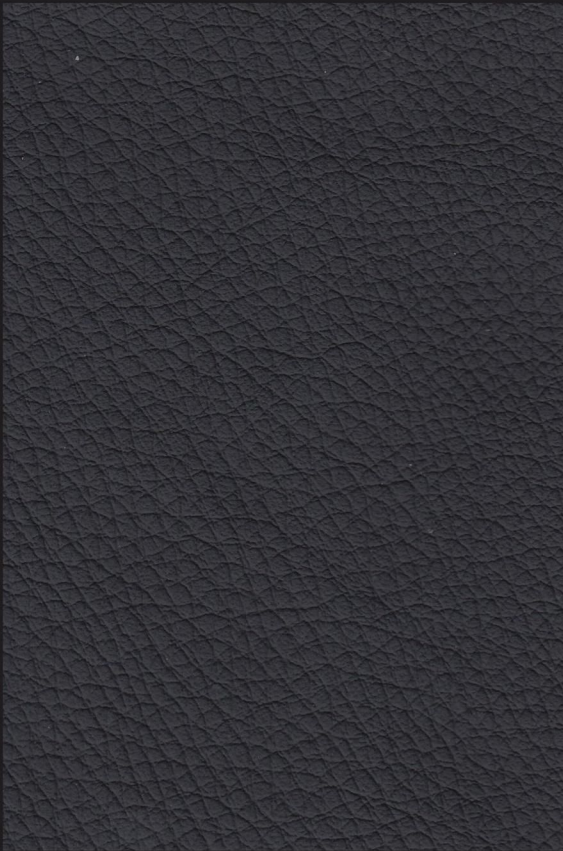
1611B cognac



1398B **k1398** jazzblau



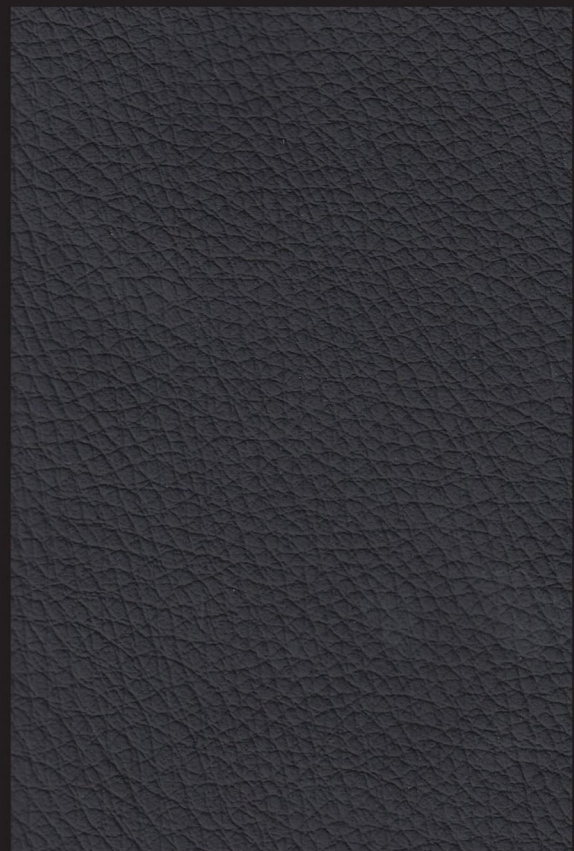
4001B Milano schwarz



| **Basis Leder / Leather**

| **Basis SA Leder / Leather**

Südamerikanische Rohware soweit verfügbar /
South American raw hides if available



| **Basis Kunstleder (k) / Imitation Leather**

Rollenbreite / width 140 cm
Rollenlänge / length 1fm 25

Kollektionsmuster sind keine Urmuster. Kleine Farbabweichungen sind möglich.
Swatches are no master samples. Small differences may occur.

BASIS + **BASIS** SA Leder / Leather

Technische Werte/ <i>technical specifications</i>	Meßmethode/ <i>test methods</i>	Werte/ <i>values</i>
Dicke/ <i>thickness</i>	DIN 53326	1,0 mm - 1,4 mm
Flächengewicht/ <i>mass per unit area</i>	DIN 53327	620 - 980 g/qm
Dehnungsprüfung/ <i>tension test</i> Höchstzugkraft/ <i>tensile test</i> Bruchdehnung/ <i>breaking elongation</i>	DIN 53328 Probekörper 2 <i>specimen 2</i>	> 120 N 35 - 70 %
Weiterreißkraft/ <i>tear strength</i>	DIN 53329/B	> 20 N
Dauerverhalten/ <i>flexicon</i> 20.000 Knickungen/ <i>flexes</i>	DIN 53351	keine Rissbildung bei 6-facher Vergrößerung <i>no cracks at 6 times magnifying</i>
Reibechtheit/ <i>rub fastness</i> trocken/ <i>dry</i> nass/ <i>wet</i> nass nach Wasserlagerung/ <i>wet after storage in water</i>	DIN 53339 DIN 54002	4 - 5 Note/class 4 - 5 Note/class 4 - 5 Note/class
Schweißblösung/ <i>sweat</i>		4 - 5 Note/class
Haftung der Zurichtung/ <i>topcoat adhesion</i>		3,5 N/cm
Heißlichtechtheit/ <i>hotlight fastness</i>	DIN 75202	5 - 7 Stufe Blauskala/ <i>class blue scale</i>
Brennprüfung/ <i>flammability</i>	FMVSS 302	< 100 mm/min

BASIS Autokunstleder / Car Imitation Leather

Technische Werte/ <i>technical specifications</i>	Meßmethode/ <i>test methods</i>	Werte/ <i>values</i>
Zusammensetzung/ <i>composition</i> Träger/ <i>backing</i>	Gestrick Jersey PE/BW	67/33 %
Dicke/ <i>thickness</i>	DIN EN ISO 2286-3	1,3 ± 0,1 mm
Flächengewicht/ <i>mass per unit area</i>	DIN EN ISO 2286-2	820 ± 50 g/qm
Zugfestigkeit/ <i>tensile strength</i> längs/ <i>length</i> quer/ <i>across</i>	DIN EN ISO 1421	≥ 500 N ≥ 350 N
Bruchdehnung/ <i>elongation</i> längs/ <i>length</i> quer/ <i>across</i>	DIN EN ISO 1421	≥ 40 % ≥ 120 %
Weiterreißkraft/ <i>tear strength</i> längs/ <i>length</i> quer/ <i>across</i>	DIN 53356	≥ 30 N ≥ 25 N
Stichausreißkraft/ <i>stitch burst strength</i> längs/ <i>length</i> quer/ <i>across</i>	DIN EN ISO 23910	≥ 60 N ≥ 70 N
Trennkraft/ <i>adhesion</i> längs/ <i>length</i> & quer/ <i>across</i>	DIN EN ISO 2411	≥ 25 N
Lichtechtheit/ <i>light fastness</i>	DIN EN ISO 105-B02	≥ 6 Note/degree
Dauerknickverhalten Normalklima/ <i>flexicon normal temperature</i> längs/ <i>length</i> & quer/ <i>across</i>	DIN 53359	≥ 50.000 Knickungen/ <i>flexes</i>
Dauerknickverhalten bei -10°C/ <i>flexicon at -10°C</i> längs/ <i>length</i> & quer/ <i>across</i>		≥ 10.000 Knickungen/ <i>flexes</i>
Abriebwerte Martindale / <i>martindale abrasion</i>	DIN EN ISO 5470-2	2 Note/class
Reibechtheit/ <i>rub fastness</i> trocken/ <i>dry</i> & nass/ <i>wet</i>	DIN ISO 105-X12 DIN EN 20105-A02	≥ 4 Note/class ≥ 4 Note/class
Wasserdichtheit/ <i>water proofness</i>	DIN EN 20811	≥ 150 cm WS
Kältebeständigkeit/ <i>low temperature resistance</i>	DIN 53361	- 20 °C
Flammfestigkeit/ <i>fire resistance</i>	DIN 75200 / ISO 3795 / MVSS 302	< 100 mm/min



Hans Reinke
Handelsgesellschaft mbH

Brandstücken 20 Tel. +49 40 39 1068-0
22549 Hamburg Fax +49 40 39 1068-29
info@hans-reinke.com www.hans-reinke.com

HOLLAND, BELGIUM & LUXEMBOURG



Hans Reinke Benelux B. V.

D'n Oliepint 2 Tel. +31 13 505 6702
5081 NT Hilvarenbeek Fax +31 13 505 3073
Netherlands info@hans-reinke.nl

SWITZERLAND & AUSTRIA



Jörg & Reinke GmbH

Bahnhofstraße 42 Tel. +41 34 402 5005
CH-6162 Fax +41 34 402 5553
Entlebuch info@joerg-leder.ch

POLAND



Automotive Textiles

Jakub Ponczyński Tel. +48 42 288 10 10
93-490 Łódź Mob. +48 513 014 610
Pabianicka 119/131 jakub@ponczynski.com